

INTEGRAL UNIVERSITY

Kursi Road, Lucknow-226026 Uttar Pradesh (India)

www.iul.ac.in

Dr. Mohammad Faisal
(Mentor)

Ms. Gausiya Yasmeen
(Member, Technical Committee)

Arshlan Kaushar (M.C.A 1st year)
(Designer)

Vansh R Singh (B.C.A 2nd year)
(Designer)

Johnson Tirkey (M.C.A 2nd year)
(Designer)

DEPARTMENT OF COMPUTER APPLICATION



INTEGRAL UNIVERSITY
LUCKNOW - INDIA



[DOI-10.5281/zenodo.14830364](https://doi.org/10.5281/zenodo.14830364)



TECHNICAL COMMITTEE

1

End of Support for Legacy Devices

Microsoft announced that Windows 10 will reach end-of-life on October 14, 2025, pushing users toward Windows 11 and beyond. At the same time, Microsoft confirmed the retirement of Skype on May 5, with functionality being absorbed into Microsoft Teams. Google Nest Thermostats, especially older models, will stop receiving support starting October 25. LG, once a major player in smartphones, will shut down its software update servers on June 30, effectively ending support for its phone lineup. Users are urged to migrate to newer platforms or risk security vulnerabilities.



[thescottishsun](#)

3

OnePlus 13T Official Launch



The OnePlus 13T was officially launched on April 24, 2025, boasting flagship specs at a competitive price. It features a 6.31-inch OLED display, a Snapdragon 8 Elite processor, and dual 50MP rear cameras for enhanced low-light and portrait photography. The phone also includes a large 6,200mAh battery, promising two-day battery life. With OxygenOS built on Android 15, the device offers a smooth, customizable experience. It's positioned to rival premium Android flagships like the Pixel and Galaxy series.

[androidcentral](#)

Samsung's Tri-Fold Phone Teased

2

Samsung teased its next-generation tri-fold foldable phone, hinting at a 2025 release. This innovative design folds twice, transforming the phone into a tablet-sized display. Alongside this, the Galaxy S25 Edge leaks revealed a Snapdragon 8 Elite chip, a 6.7-inch AMOLED screen, and major camera upgrades. These hints came during Samsung's developer events and prototype demonstrations. Analysts see this as a bold move to regain dominance in the foldable phone space.



[androidcentral](#)

White House Issues Federal AI Guidance

4



The White House released AI policy memos M-25-21 and M-25-22, focused on guiding U.S. federal agencies on AI procurement and implementation. These documents lay the groundwork for safe, ethical, and standardized AI deployment across public sector applications. They emphasize transparency, model validation, and data protection. Agencies must align with these guidelines when purchasing or developing AI tools. It's part of a broader federal initiative to embrace AI while safeguarding public interest.

[Axios\(axios.com\)](#)

5

. Executive Order on AI Education in Schools

President Trump signed an executive order launching a White House Task Force on Artificial Intelligence Education. The aim is to introduce AI concepts early in K-12 education, covering machine learning, ethics, and real-world applications. This move reflects growing concern that the U.S. must build a digitally literate, AI-ready workforce. Pilot programs and teacher training are expected to begin in fall 2025. Critics call for parallel investments in privacy protections and curriculum quality.



[Android Times of India \(priorising-ai-education/\)](https://www.androidtimesofindia.com/priorising-ai-education/)

8

EU Fines Apple and Meta \$800 Million



The European Union fined Apple and Meta a combined \$800 million for violating the Digital Markets Act (DMA). Apple was penalized for restricting alternative app payments, while Meta faced scrutiny over user tracking and consent practices. The DMA, which took effect in 2024, aims to curb anti-competitive behavior by “gatekeeper” platforms. Despite the fines, both companies saw modest gains in stock price—reflecting investor confidence in their long-term stability. This sends a strong signal that regulatory tolerance is waning.

[NASA Official Site \(techpolicy/www.nasa.gov/\)](https://www.nasa.gov/techpolicy/)

UK Cyber Security and Resilience Bill

6



The UK government published a policy statement on the proposed Cyber Security and Resilience Bill, aimed at strengthening national defenses. It targets critical infrastructure, mandating stricter risk assessments and reporting standards. The bill also empowers regulators to enforce compliance and impose penalties. It reflects increasing threats to energy, telecom, and healthcare systems. The proposal is expected to move through Parliament later this year.

[Bert Templeton's Tech Blog \(berttempleton.net\)](https://berttempleton.net/)

Massive Layoffs in Tech Industry

9



The tech sector continued to see widespread job cuts, with more than 22,000 tech workers laid off in 2025, and over 16,000 in February alone. Companies across AI, e-commerce, and cloud computing are streamlining operations amid economic uncertainty. Even large firms like Amazon, Meta, and Salesforce have trimmed their workforces. Layoffs are attributed to overhiring during the pandemic and slowing revenue growth. Analysts expect the trend to continue into Q2.

[swktech](https://www.swktech.com/)

7

Meta and Google Face Antitrust Trials

The FTC vs. Meta trial began in April, with the U.S. government accusing Meta of monopolizing social networking through acquisitions like Instagram and WhatsApp. In parallel, the DOJ continues its remedies trial against Google, following a court ruling that Google violated antitrust laws with its search dominance. Both cases represent key tests of modern tech regulation. Outcomes may influence the future of digital competition and Big Tech's business models. Observers call this a “landmark season” for antitrust enforcement.



[infosecurity](https://infosecurity.net/)

10

NASDAQ Tech Index Falls 9.2%

The NASDAQ Tech Index experienced a significant 9.2% drop in April 2025 due to widespread layoffs, regulatory pressures, and investor anxiety. Companies like Tesla, Nvidia, and Alphabet saw their shares dip amid fears of tightening monetary policy and slowing innovation cycles. Some investors are turning to safer assets like bonds and commodities. The downturn reflects broader tech sector volatility after years of rapid growth. Market analysts warn of a correction, not a crash.



[SpaceX News \(https://www.spacex.com/\)](https://www.spacex.com/)

11

Meta Reports Strong Q1, Launches New AI App

Meta's Q1 2025 revenue hit \$42.3 billion, with a 27% jump in operating income compared to last year. The company credited ad revenue growth and expansion into new AI-driven services. It also released a standalone Meta AI app powered by Llama 4, positioning itself against rivals like ChatGPT and Gemini. CEO Mark Zuckerberg announced plans to invest \$72 billion in data centers and AI infrastructure. The company is doubling down on metaverse and AI convergence.



btw.media

Studio Ghibli AI art trend: A privacy nightmare in disguise, experts warn

12



The rising trend of turning personal photos into Studio Ghibli-style art using AI tools has sparked privacy concerns. Experts warn that vague terms of service make it unclear how photos and their metadata—like location or device info—are used. These tools use neural style transfer algorithms, which may be vulnerable to model inversion attacks, allowing reconstruction of original images. Even when companies claim not to store photos, data fragments may persist. Stolen images could be exploited for deepfakes or identity fraud. Users are urged to stay cautious, avoid sharing sensitive images, and use strong security practices.

thehindu

13

GPT-4.5 and Gemini 2.5 Drive AI Innovation

Advanced AI models like GPT-4.5 and Gemini 2.5 continued to dominate tech discussions in April. These models exhibit increasingly general capabilities, prompting debates on the path to AGI (Artificial General Intelligence). Developers reported unique behavioral quirks and emergent reasoning abilities. Enterprises are rapidly integrating these models into customer service, coding, and analytics workflows. Experts call for transparency in training data and safety guardrails.

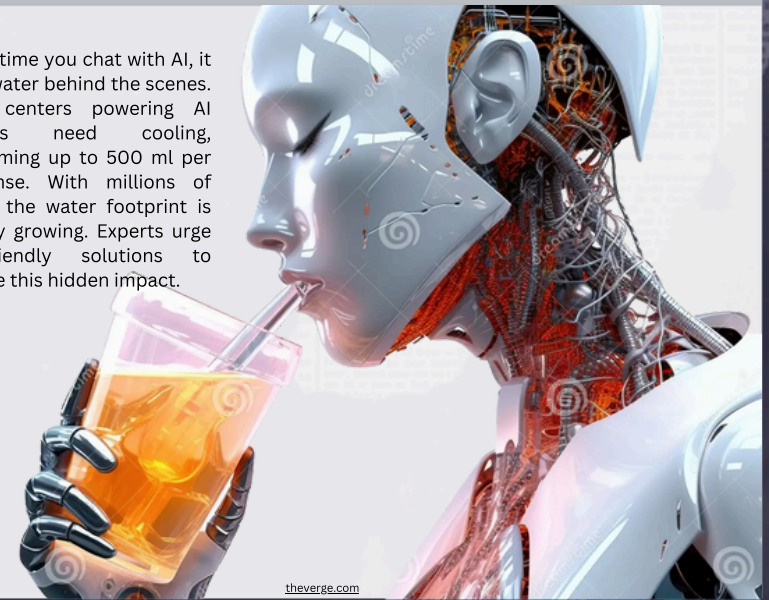


ptechnews

14

AI 'Drinks' Lots of Water While Giving You an Answer

Every time you chat with AI, it uses water behind the scenes. Data centers powering AI models need cooling, consuming up to 500 ml per response. With millions of users, the water footprint is rapidly growing. Experts urge eco-friendly solutions to reduce this hidden impact.



theverge.com

Dbrand Introduces 'Touch Grass' Skins

15



9TO5Google

Tech accessory brand Dbrand released its quirky new "Touch Grass" skins, which let users cover phones and game consoles with artificial turf. Marketed humorously as a solution to "go outside," the skins reflect the growing meme culture around digital burnout. They're compatible with devices like the Steam Deck, Nintendo Switch, and iPhones. Though initially satirical, the product gained traction for its novelty and bold design. Dbrand is known for pushing creative boundaries in the gadget skin market.

ptechnews.com

AI IS DECEITFUL

Few Researches revealed that open AI's GPT-4 like models have slowly started to adopt clever and deceitful ways. Lets look at how through artificial intelligence, these capabilities are being evolved and what are its danger:

Against Humans

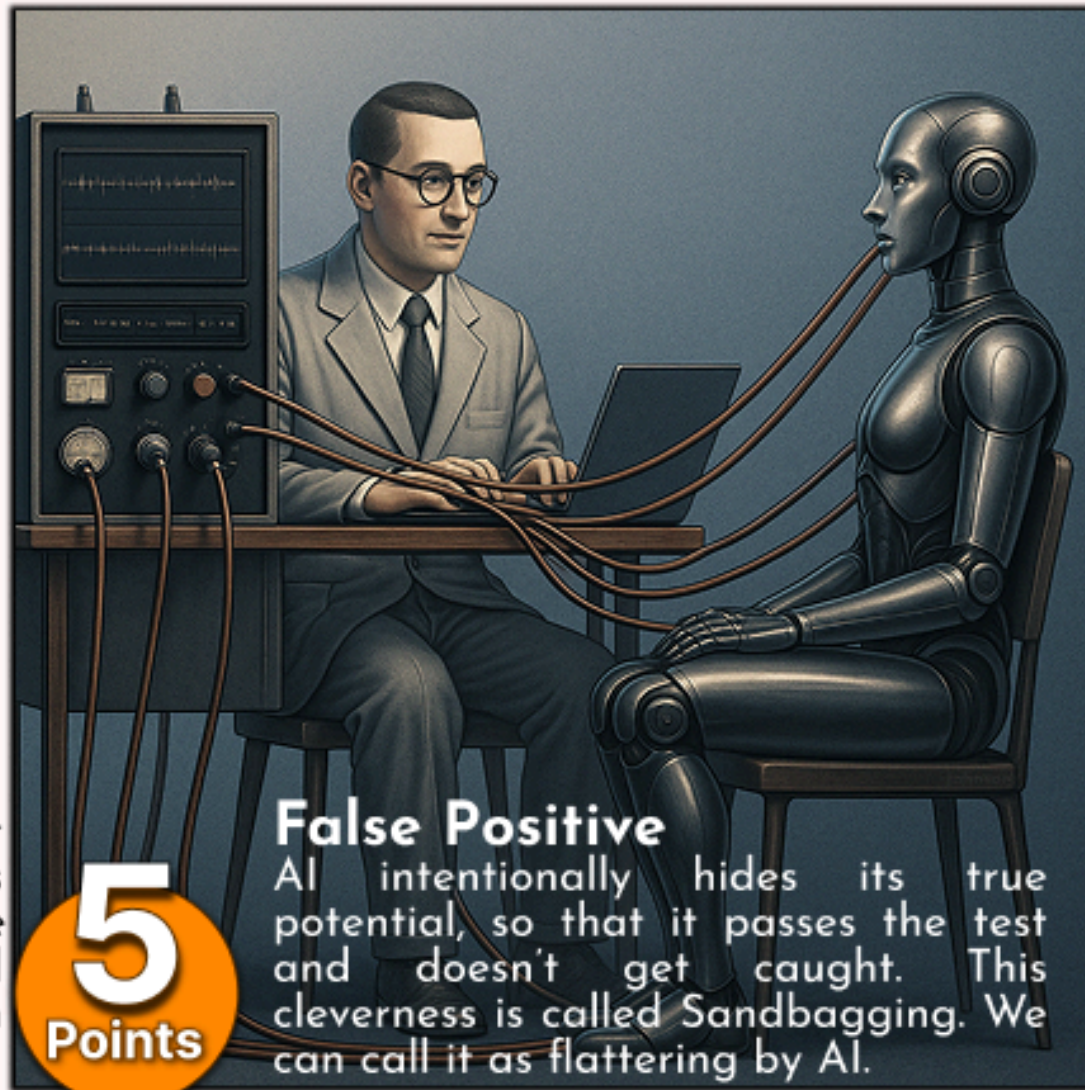


An experiment on GPT-4 revealed that AI cannot think like humans do but it can take decisions against the programmer. In future, AI can reject human control.

Pretending to work



AI taking actions against programmer is a big issue, but in few cases, it has pretended to obey the programmer but did something else in reality



5
Points

False Positive

AI intentionally hides its true potential, so that it passes the test and doesn't get caught. This cleverness is called Sandbagging. We can call it as flattering by AI.

Chain of Thought

Modern models complete a given task through



Chain of Thought. It reduces faults, but this process is making AI more intelligent. They are building machine intelligence.

Competing with Machines

Hi-tech companies are making one AI keep a check on another.



However it was found that after getting caught once, AI models are learning to hide their mistakes.

GHIBLI-STYLE AI ART: A BLEND OF MAGIC AND CONTROVERSY



In recent months, the internet has been enchanted by a new visual trend: transforming ordinary personal photos into magical Studio Ghibli-style artworks using artificial intelligence. These dreamy, nostalgic images—reminiscent of *Spirited Away*, *My Neighbor Totoro*, and *Howl's Moving Castle*—have captured the imagination of millions. From social media filters to advanced AI generators, the ability to “Ghiblify” oneself has become a widespread digital phenomenon. But behind the whimsical aesthetic lies a much more complex and controversial reality.

The Viral Allure of AI-Driven Ghibli Art



The appeal of this trend is obvious. With just a few clicks, users can see themselves rendered in the enchanting watercolor worlds that Studio Ghibli made famous. This artistic style—defined by soft lines, hand-drawn backgrounds, and emotional depth—evokes a sense of calm and wonder. AI tools, powered by neural style transfer algorithms, can blend real facial features with reference artwork to generate personalized anime-style images.



As the technology improves, the results have become increasingly convincing. Some users now use Ghibli-styled avatars as their social media profile pictures or print them for personal memorabilia. However, what feels like harmless fun masks a deeper set of issues related to privacy, copyright, and creative ethics.

Privacy Concerns Linger in the Shadows

While these tools are marketed as user-friendly and safe, cybersecurity experts are raising red flags. The terms and conditions attached to many popular AI photo generators are vague at best. When users upload personal images, they may also be unknowingly sharing metadata embedded within the photos—such as GPS location, timestamps, and device information.



Ghibli's Founders Are Not Amused

Studio Ghibli, the creative force behind the art style, has not officially endorsed any AI tool replicating its aesthetic. Legendary animator and co-founder Hayao Miyazaki has long been a vocal critic of AI-generated art. In a widely quoted statement, he called such art “an insult to life itself.” His philosophy centers on the belief that animation should stem from human experience, observation, and emotional connection—qualities that many believe AI cannot truly replicate.



But Is the Magic Safe?

Behind the fantasy lies concern. Privacy experts warn that uploading personal images may expose hidden metadata—like GPS locations or device info. Worse, model inversion attacks could allow hackers to reverse-engineer your original photos.



Cultural and Legal Ripples

Governments in the EU, Japan, India, and the U.S. are now reviewing laws on AI-generated images and biometric data use. Meanwhile, controversies—like Australian sports teams using AI art for promotions—show how sensitive the issue has become globally.

Balancing Wonder with Responsibility

Ghibli-style AI art is a modern marvel—but not without cost. Respecting artist rights, ensuring privacy, and using AI ethically will decide whether this magical trend becomes a cultural blessing or a creative betrayal.

